



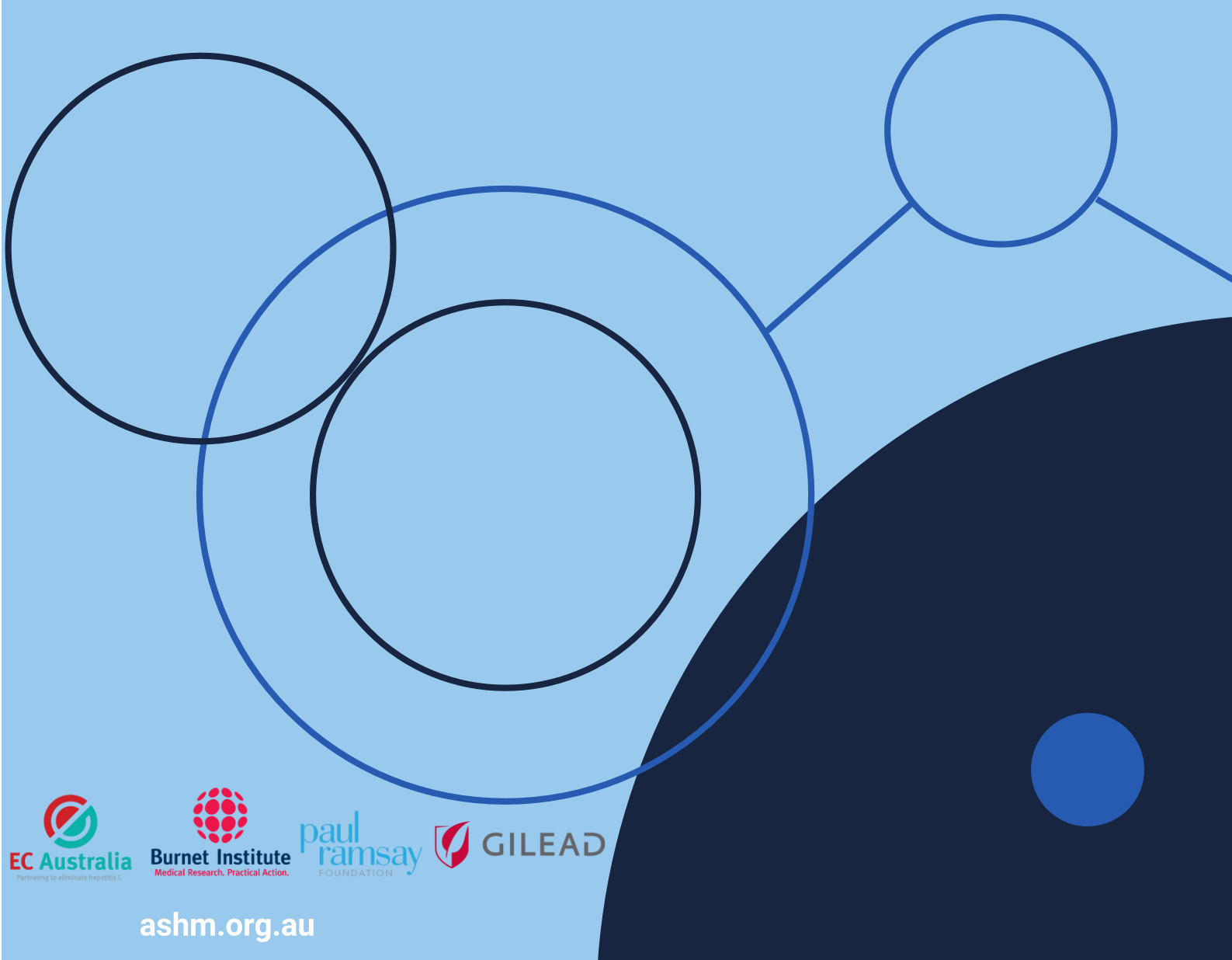
ashm

Developing a sustainable HIV,
viral hepatitis & sexual health workforce

Beyond the C-

Hepatitis C Elimination in Your Practice

Starter Kit



ashm.org.au

Contents

Project Information	4
<i>Project Description & Rationale</i>	5
<i>Project Overview</i>	6
- Project Details	6
- Project Benefits	7
- Practice Requirements	9
How Can My Practice Sign Up?	10
- Eligibility Criteria	11
- How to Sign Up	12
FAQs	13
Useful Links & Resources	15
Project Committee	16

Abbreviations

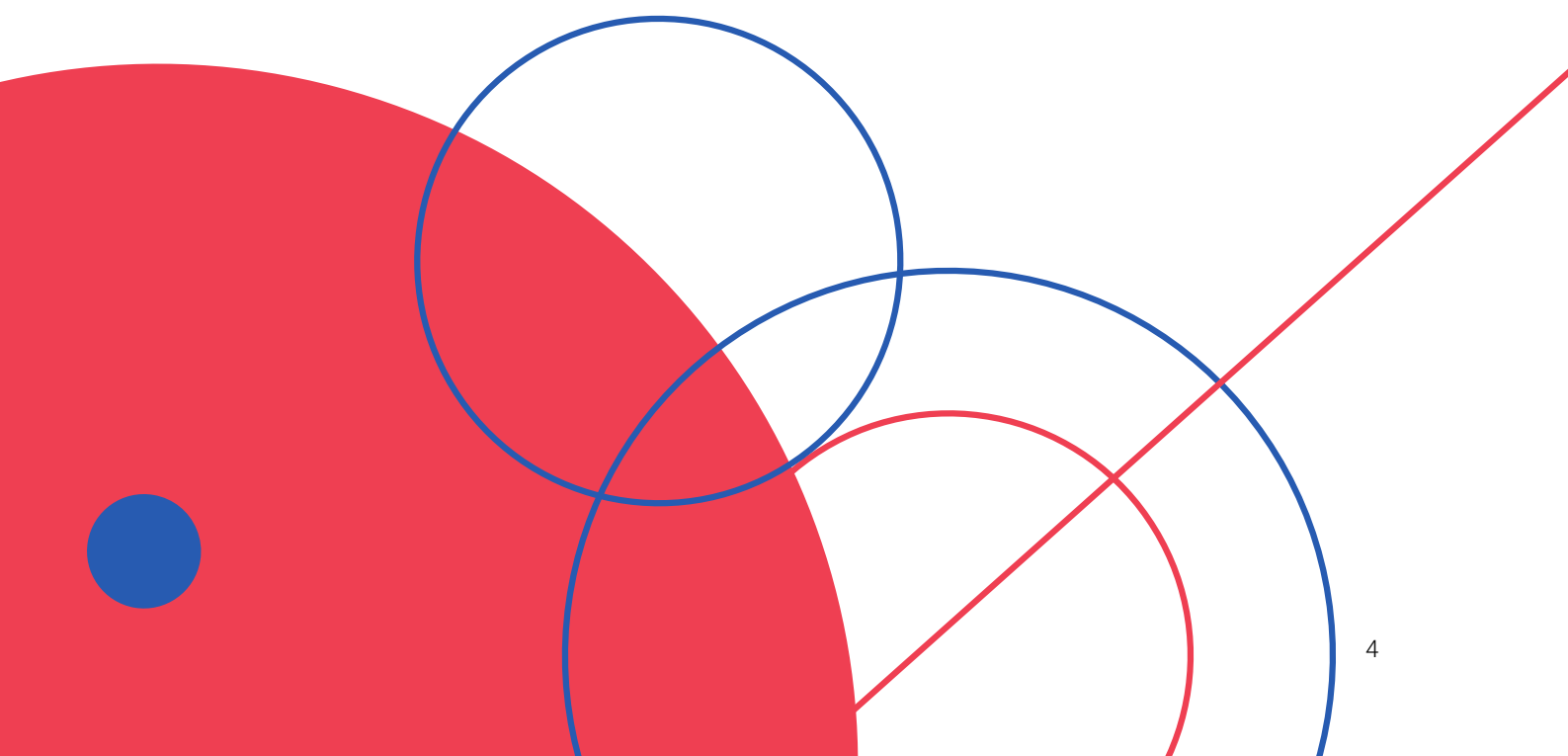
ASHM	Australasian Society for HIV, Viral Hepatitis and Sexual Health Medicine
CDM	Chronic Disease Management
CPD	Continuing Professional Development
CQI	Continuous Quality Improvement
HCV	Hepatitis C
MBS	Medicare Benefits Schedule
NMBA	Nursing and Midwifery Board
PDSA	Plan Do Study Act
PHN	Primary Health Network
PIP	Practice Incentive Program
RACGP	The Royal Australian College of General Practitioners
QI	Quality Improvement



ashm

Developing a sustainable HIV,
viral hepatitis & sexual health workforce

Project Information



Project Description & Rationale

Description

Beyond the C – Hepatitis Elimination in your Practice Project is led by the Australasian Society for HIV, Viral Hepatitis and Sexual Health Medicine (ASHM).

The project aims to increase the number of patients screened, tested, treated and linked to appropriate care for hepatitis C (HCV), within a primary care setting.

How?

The project will equip eligible health practitioners and practice managers with the necessary skills and resources to conduct HCV case finding and clinical auditing within their own practice to improve the identification of new cases, follow up, treatment and monitoring.

Practices will be guided by our General Practice Nurse Consultant to utilise their Medical Software System to identify, recall and treat new and existing patients for HCV. The clinical auditing Project is designed to be embedded into current practice processes, ensuring a streamlined and sustainable way to build team capacity and improve care for patients living with HCV.

Background and Rationale

Each year, ASHM trains approximately 1,000 GPs, nurses and other healthcare workers in HCV screening, treatment and follow-up. This education effectively targets practitioners working in priority service settings including general practice, alcohol and other drug services and Aboriginal and Torres Strait Islander health.

Beyond the C – Hepatitis C Elimination in Your Practice seeks to build upon the HCV training offered to healthcare workers, by providing high level support for practitioners to actively find, manage and treat patients. Case finding, through the form of clinical auditing, is recognised as an effective tool for improving patient outcomes and delivering best practice care, forming part of the Department of Health's, Practice Incentive Program for Quality Improvement (PIP QI).

Project Overview

Project Details

Beyond the C – Hepatitis C Elimination in Your Practice is a 12 month Project funded by Eliminate C Australia and Gilead Sciences. *Beyond the C – Hepatitis C Elimination in Your Practice* is a 12 month Project funded by Eliminate C Australia and Gilead Sciences. The Project centres on a whole of practice approach to develop team capacity and sustainability around hepatitis C (HCV).

Through the provision of virtual support from our General Practice Nurse Consultant, participants will be assisted to conduct HCV clinical auditing within their practice. As part of this Project, practices will be guided to complete at least one Plan Do Study Act (PDSA) cycle as a form of Quality Improvement (QI).

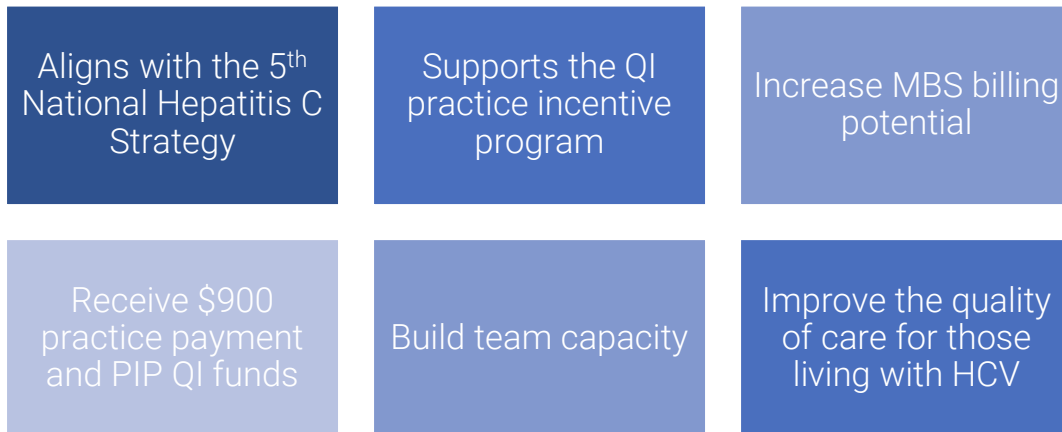
Completion of the audit in combination with a PDSA cycle, will enable practices to qualify for the Department of Health's, Practice Incentive Program for Quality Improvement payment (PIP QI)*. Practices will also be provided guidance on how to increase billing potential, through for example, chronic disease management plans, and given access to auxiliary Project funds.

Project registration opens September 2020 and will be ongoing until March 2021. Length required for practice commitment will depend on the practice and the level of support required to conduct HCV clinical auditing and PDSA cycles. These timeframes will be determined in collaboration with the General Practice Nurse Consultant.

* total amount practices qualify for under the PIP QI scheme is dependent on a practices Standard Whole Patient Equivalent (SWPE)

Project Benefits


Benefits of participating in *Beyond the C – Hepatitis C Elimination in Your Practice*:




As a participant of *Beyond the C – Hepatitis C Elimination in your practice* you will join a community who are contributing to the elimination of Hepatitis C in Australia. By participating in this project, you will be:

- Saving lives
- Reducing onward transmission of HCV
- Improving quality of life for marginalised populations
- Creating a new culture in affected groups – to expect testing, care and cure free from stigma and discrimination
- Providing an opportunity to address other clinical priorities and needs
- Helping to eliminate HCV in Australia and meet global elimination targets


Additional benefits for **Practice Managers** include:

- 
- Access to financial reimbursement via PIP QI and project funds
 - New opportunities for care planning and CDM services supports
 - Support the continued accreditation of your practice
 - Opportunity to provide evidence of CPD and QI
 - Access the opportunity to integrate CQI into everyday practice
 - Lead the effective utilisation of team skills

Additional benefits for **General Practitioners** include:

- 
- Identification and treatment of people with HCV
 - Preventing liver cancer and community transmission of HCV
 - Opportunity for role delegation across the 12 month plan of care
 - Increased billing potential through team based care
 - Enhanced learning through ASHM online education and resources
 - Meets RACGP education guidelines - QI CPD points

Additional benefits for **General Practice Nurses** include:

- 
- Eligibility for NMBA CPD requirements
 - Access to additional learning opportunities via webinars, e-Learning
 - Demonstrate the value of general practice nursing
 - Facilitate person centred care in general practice
 - Access support via a general practice nurse consultant
 - Receive opportunity to expand your scope of practice

Practice Requirements

As part of *Beyond the C – Hepatitis C Elimination in Your Practice*, practices will receive:

- Access to virtual support, via our General Practice Nurse Consultant
- Support for linkage to the local PHN for PIP QI qualification
- Priority places at ASHM trainings
- Access to additional resources including PDSA guides, Decision Making Tools, EC toolkit, REACH C and ASHM's Hepatitis C Community of Practice
- Auxiliary funding outside of PIP QI
- Information on how to increase practice billing potential

Practices which sign up will be required to provide the following HCV related data, as per their medical software system:

- Baseline – total number of active patients
- Total number of patients identified through audit as appropriate for recall
- Total number of patients recalled for testing:
 - o of these, total number tested
 - o of these, total number treated
- Patient demographics, including for example:
 - o Gender
 - o Age
 - o Aboriginal and Torres Strait Islander status
 - o Culturally and Linguistically Diverse status

At the following timepoints:

- 1, 3 and 6 months

Practices will be provided data templates and guidance on how to complete these throughout the Project.



ashm

Developing a sustainable HIV,
viral hepatitis & sexual health workforce

How Can My Practice Sign Up?



Eligibility Criteria

To be considered eligible for participation in *Beyond the C – Hepatitis C Elimination in Your Practice*:

- You are either a General Practitioner, Registered or Enrolled Nurse or Practice Manager
- Your practice is currently enrolled in the Department of Health PIP QI incentive*
- Your practice has ability to extract data from your practice medical software system
- You can provide documented commitment to the Project from the Practice Principal or representative via ASHM's Terms of Reference^

**More information available upon request
^ASHM will provide this documentation*

How to Sign Up

1. Complete *Beyond the C – Hepatitis C Elimination in Your Practice Eligibility Criteria* [here](https://www.surveymonkey.com/r/BeyondtheC_Eligibility), or copy the following into your browser:
https://www.surveymonkey.com/r/BeyondtheC_Eligibility
 - a. As part of this, you will be required to sign and upload the *Terms of Reference*
2. Our Project team will review your application and contact you to confirm your place in *Beyond the C – Hepatitis C Elimination in Your Practice*
3. Following this, our General Practice Nurse Consultant will contact you to commence the Project

Frequently Asked Questions

Can I sign up if I've never done a clinical audit before?

Yes. Our General Practice Nurse Consultant will provide ongoing virtual support to guide your practice through the auditing process.

Can I sign up if I've never done a PDSA cycle before?

Yes. Our General Practice Nurse Consultant will provide ongoing virtual support to guide your practice through the process of developing and conducting PDSA cycles. We will also provide ASHM PDSA cycle templates to assist in the process.

How much funding can my practice receive?

Practices which sign up and submit data to the PHN may qualify for the Department of Health's Practice Incentive Program Quality Improvement (PIP QI) payment. The amount of the PIP QI payment is dependent on the size of the practice, as per the Standard Whole Patient Equivalent and is a maximum payment of \$12,500 per quarter.

All practices which sign up and complete the Project will also receive \$900 in auxiliary Project funds.

How much time do I/ my practice need to commit?

This will be determined in collaboration with our General Practice Nurse Consultant. Duration of commitment will be based on several factors, including for example, length of time your practice requires to run a clinical audit, number of PDSA cycles completed etc.

What happens with the data I provide?

No identifying data will be recorded in the Project. The General Practice Nurse Consultant will provide a standardised template for de-identified data collection and reporting for the project period, which will be submitted to an ASHM email account.

ASHM handles all participant data according to strict internal data handling procedures, with all data stored on secure servers in accordance with

Australian privacy legislation. ASHM takes all reasonable steps to secure personal information. Electronic information is protected by various security measures and access to information and databases is restricted to staff and officers of ASHM by network access controls including password protection, and physical security measures.

ASHM does not have any data stored on its own servers. ASHM engages with reputable providers such as Microsoft, to store all its data. Whilst ASHM has its own security protocols and processes it is also reliant on those of third parties.

ASHM uses various scanning and virus protection techniques to protect the data it holds from malicious attacks. Microsoft's Advanced Threat Protection is deployed, which includes email scanning, protection against phishing and automatic scanning of files added to SharePoint. The importance of good email hygiene is regularly conveyed to staff in order to further limit the risk of malicious attacks on our data.

When is the latest I can join the Project?

The closing date for Project registrations is March 31st 2021.

Who funds this Project?

This Project has been made possible due to funding from Eliminate C Australia and an unconditional grant from Gilead Sciences. Sponsorship is governed by ASHM's Sponsorship Policy and the sponsors have no control over content, tone, emphasis, allocation of funds or selection of recipients. ASHM does not endorse or promote any sponsor's product or service.

Useful Links & Resources

<i>Beyond the C – Hepatitis C Elimination in Your Practice</i> - Eligibility Criteria	https://www.surveymonkey.com/r/BeyondtheC_Eligibility
<i>Beyond the C – Hepatitis C Elimination in Your Practice</i> – Introductory webinar	https://vimeo.com/457960224
ASHM	https://www.ashm.org.au/
ASHM's Community or Practice	https://ashm.org.au/cop/
REACH C	https://reach-c.ashm.org.au/
DoH PIP QI information	www.health.gov.au
EC Toolkit	https://ecpartnership.org.au/ec_toolkit
Hepatitis Australia	https://www.hepatitisaustralia.com/

Project Committee

Beyond the C – Hepatitis C Elimination in Your Practice is led by a Project committee. Members are experienced in hepatitis C and/or the design, development and delivery of practice support programs across Australia.



Meghan Campbell
Registered Nurse, Program
Manager Teen Clinic



Chloe Layton
Nurse Coordinator, EC
Partnership



John Didlick
Policy Analyst, Hepatitis
Australia



Anne Lechner
Project Officer, ASHM



Riwka Hagen
Consultant, Medical
Business Services



Dr Robert Page
GP, East Sydney Doctors



Melinda Hassall
Clinical Nurse Lead, ASHM



Ros Rolleston
Project Lead, Registered
Nurse, ASHM

Contact

Project team

E: BeyondtheC@ashm.org.au

Anne Lechner

M: +61 435 790 489

E: anne.lechner@ashm.org.au

Melinda Hassall

M: + 61 422 596 701

E: melinda.hassall@ashm.org.au

